

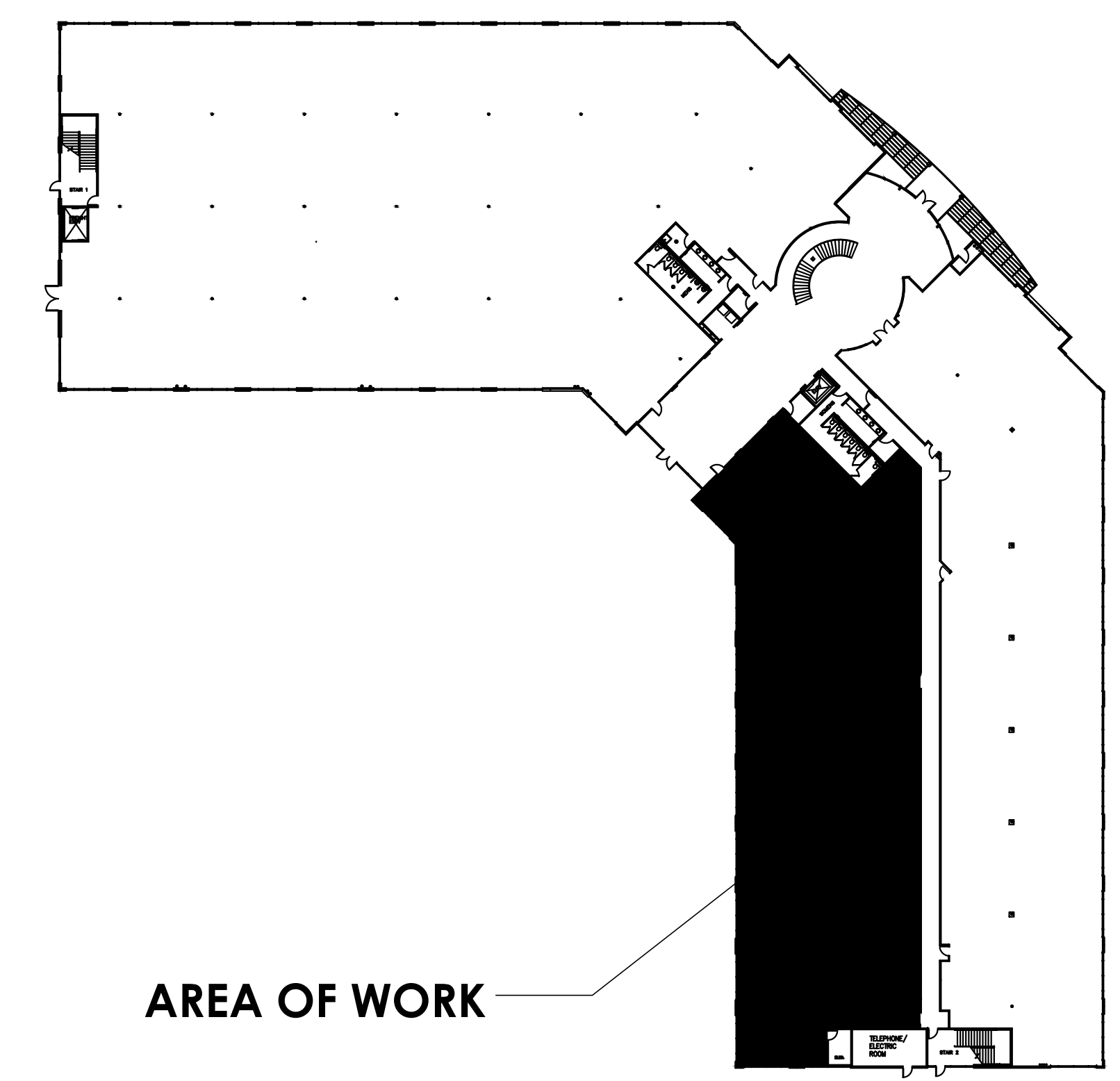
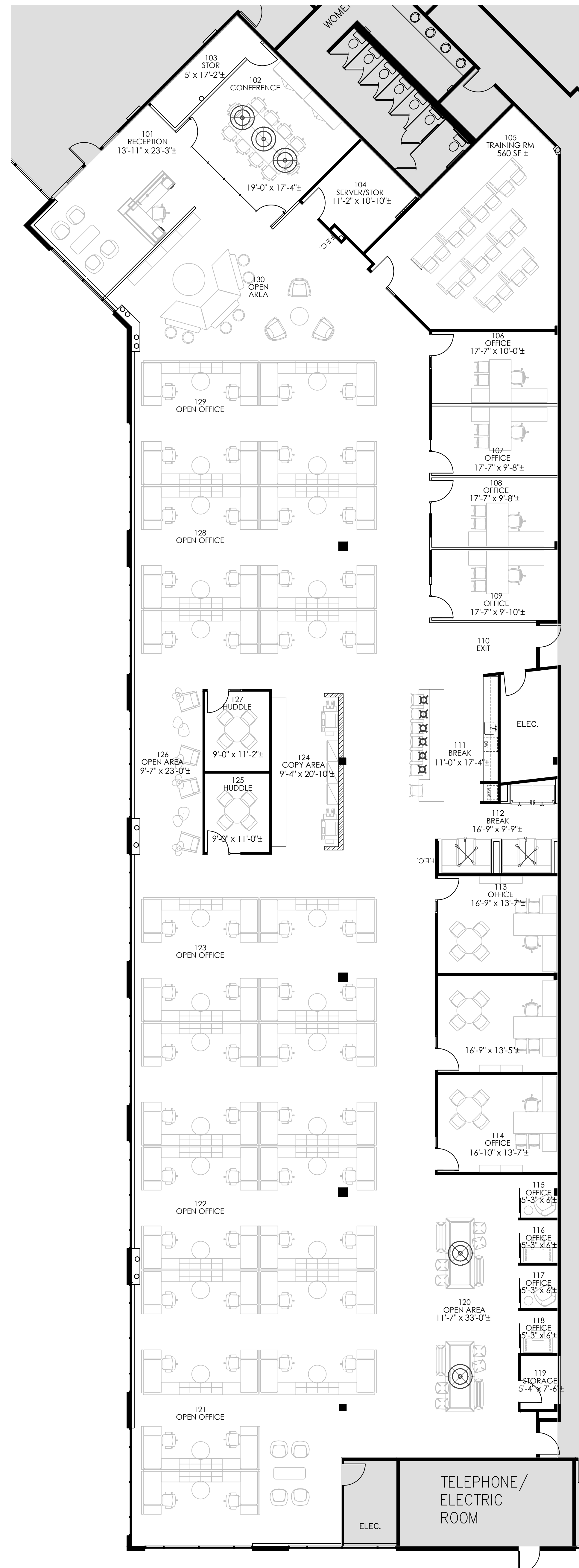
ISSUED FOR PRELIMINARY
PURPOSES ONLY.

THESE DOCUMENTS MAY NOT BE USED
FOR REGULATORY APPROVAL,
PERMITTING OR CONSTRUCTION.

These drawings are assumed to be complete and final. It shall be the tenant/client's responsibility to review and bring in writing any design discrepancies to the designer's attention. Any design changes will be at additional expense. The designer shall not be held responsible for city, state and federal code/regulation authority's interpretations.

Approved: _____ Date: _____

CITY OF DALLAS STAMP REGION
2.5" x 7.5"



AREA OF WORK

Key Plan
Not to Scale

CODE INFORMATION

CODE COMPLIANCE

- BUILDING - 2018 IBC
- FIRE SAFETY - 2018 IFB
- MECHANICAL - 2018 IMC
- PLUMBING - 2018 IPC
- ELECTRICAL - 2017 NEC
- ENERGY - 2018 IECC
- ACCESSIBILITY - 2012 TAS

OTHER

- FULLY FIRED SPRINKLERED OCCUPANCY GROUP - YES
- BUSINESS - BUSINESS

OCCUPANCY LOAD SUMMARY - SCOPE OF WORK

OCCUPANT USE	AREA (S.F.)	LOAD FACTOR	# OF OCCUPANTS
B OCCUPANCY	7558	150	51
B CONCENTRATED	4078	HEADCOUNT	56
A3 OCCUPANCY	0	15	0
E OCCUPANCY	0	20	0
S OCCUPANCY	0	300	0
TOTAL	11636		107

EGRESS

- 100' COMMON PATH OF EGRESS (MAX. ALLOWED)
- 43' COMMON PATH OF EGRESS (ACTUAL)
- 2 EXITS (MIN. REQUIRED)
- 3 EXITS (ACTUAL)
- 214' LONGEST DIAGONAL
- 72' EXIT SEPARATION (MIN. REQUIRED)
- 187' EXIT SEPARATION (ACTUAL)
- 50' DEAD END (MAX. ALLOWED)
- 0' DEAD END (ACTUAL)

LEGEND

(ALL SYMBOLS MAY NOT APPLY)

GENERAL

- 0000 ROOM NUMBER
- OFFICE ROOM NAME
- PHONE BOARD
- WATER LINE WITH SHUT-OFF VALVE
- FIRE EXTINGUISHER W/ CABINET
- FIRE EXTINGUISHER ON HOOK
- EXISTING PARTITION
- NEW PARTITION
- DEMISING PARTITION W/ SOUND INSULATION
- PARTITION WITH SOUND INSULATION
- ONE HOUR PARTITION W/ SOUND INSULATION
- TWO HOUR PARTITION W/ SOUND INSULATION
- SIDELIGHT/WINDOW

ROOM SIZES ARE APPROXIMATE ONLY AND ARE NOT TO BE USED FOR FINAL DETERMINATION OF FURNITURE SIZES OR PLACEMENT.

No.	For Review	Date

Spec Suite 180

Tennyson Office
Center II
6200 Tennyson Parkway
Suite No: 180
Plano, Texas 75024

14,621 RSF
Project ID: 17-1039-1030

Sheet Title
Preliminary Plan

Sheet Number © 2021

1.0

PREPARED BY: AM CHECKED BY: AM