

01 Preliminary Plan

Scale: 1/8" = 1'-0"



CODE INFORMATION

CODE COMPLIANCE

- BUILDING - 2018 IBC
- FIRE SAFETY - 2018 IFC
- MECHANICAL - 2018 IMC
- PLUMBING - 2018 IPC
- ELECTRICAL - 2017 NEC
- ENERGY - 2018 IECC
- ACCESSIBILITY - 2012 TAS

OTHER

- FULLY FIRED SPRINKLERED - YES
- OCCUPANCY GROUP - BUSINESS

OCCUPANCY LOAD

FUNCTION OF SPACE	LOAD FACTOR	AREA (S.F.)	# OF OCCUPANTS
BUSINESS AREAS	150 GROSS	2325	16
CONCENTRATED BUSINESS USE AREA	HEAD COUNT	444	6
TOTAL		2769	22

EGRESS

- 100' COMMON PATH OF EGRESS (MAX. ALLOWED)
- 64' COMMON PATH OF EGRESS (ACTUAL)
- 1 EXITS (MIN. REQUIRED)
- 1 EXITS (ACTUAL)
- 50' DEAD END (MAX. ALLOWED)
- 10' DEAD END (ACTUAL)

LEGEND

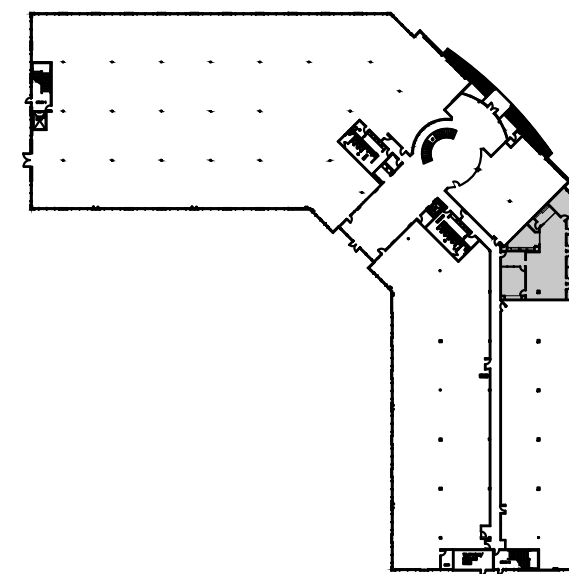
(ALL SYMBOLS MAY NOT APPLY)

- EXISTING PARTITION
- NEW PARTITION
- DEMISING PARTITION W/ SOUND INSULATION
- PARTITION W/ SOUND INSULATION
- ONE HOUR PARTITION
- TWO HOUR PARTITION
- SIDELIGHT/WINDOW
- PHONE BOARD
- WATER LINE W/ SHUT-OFF VALVE
- FIRE EXTINGUISHER W/ CABINET
- FIRE EXTINGUISHER ON HOOK

THIS PLAN IS SUBJECT TO APPROVAL BY THE MUNICIPAL CODE AUTHORITIES.

THESE DOCUMENTS ARE INCOMPLETE AND MAY NOT BE USED FOR REGULATORY APPROVAL, PERMIT OR CONSTRUCTION.

ROOM SIZES ARE APPROXIMATE ONLY AND ARE NOT TO BE USED FOR FINAL DETERMINATION OF FURNITURE SIZES OR PLACEMENT.



N

Key Plan

Not to Scale

