

## CODE INFORMATION

### CODE COMPLIANCE

BUILDING	- 2018 IBC
FIRE SAFETY	- 2018 IFC
MECHANICAL	- 2018 IMC
PLUMBING	- 2018 IPC
ELECTRICAL	- 2017 NEC
ENERGY	- 2015 IECC
ACCESSIBILITY	- 2012 TAS

### OTHER

FULLY FIRED SPRINKLERED	- YES
OCCUPANCY GROUP	- BUSINESS

### OCCUPANCY LOAD

OCCUPANT USE	AREA (S.F.)	LOAD FACTOR	# OF OCCUPANTS
B OCCUPANCY	2380	150	16
B CONCENTRATED	389	50	8
<b>TOTAL</b>	<b>2769</b>		<b>24</b>

### EGRESS

100'	COMMON PATH OF EGRESS (MAX. ALLOWED)
64'	COMMON PATH OF EGRESS (ACTUAL)
1	EXITS (MIN. REQUIRED)
1	EXITS (ACTUAL)
50'	DEAD END (MAX. ALLOWED)
N/A	DEAD END (ACTUAL)

## LEGEND

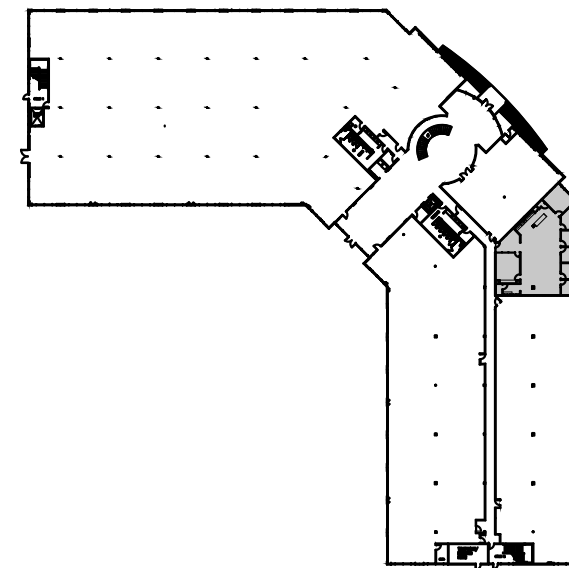
(ALL SYMBOLS MAY NOT APPLY)

- EXISTING PARTITION
- NEW PARTITION
- DEMISING PARTITION W/ SOUND INSULATION
- PARTITION W/ SOUND INSULATION
- ONE HOUR PARTITION
- TWO HOUR PARTITION
- SIDELIGHT/WINDOW
- PHONE BOARD
- WATER LINE W/ SHUT-OFF VALVE
- FIRE EXTINGUISHER W/ CABINET
- FIRE EXTINGUISHER ON HOOK

THIS PLAN IS SUBJECT TO APPROVAL BY THE MUNICIPAL CODE AUTHORITIES.

THESE DOCUMENTS ARE INCOMPLETE AND MAY NOT BE USED FOR REGULATORY APPROVAL, PERMIT OR CONSTRUCTION.

ROOM SIZES ARE APPROXIMATE ONLY AND ARE NOT TO BE USED FOR FINAL DETERMINATION OF FURNITURE SIZES OR PLACEMENT.



**01** Preliminary Plan  
Scale: 1/8" = 1'-0"



Key Plan  
Not to Scale

